

# Welcome to the Green Card Seminar

**Tracey Rawling Church**

**Director of Brand and Reputation**



# Agenda

---

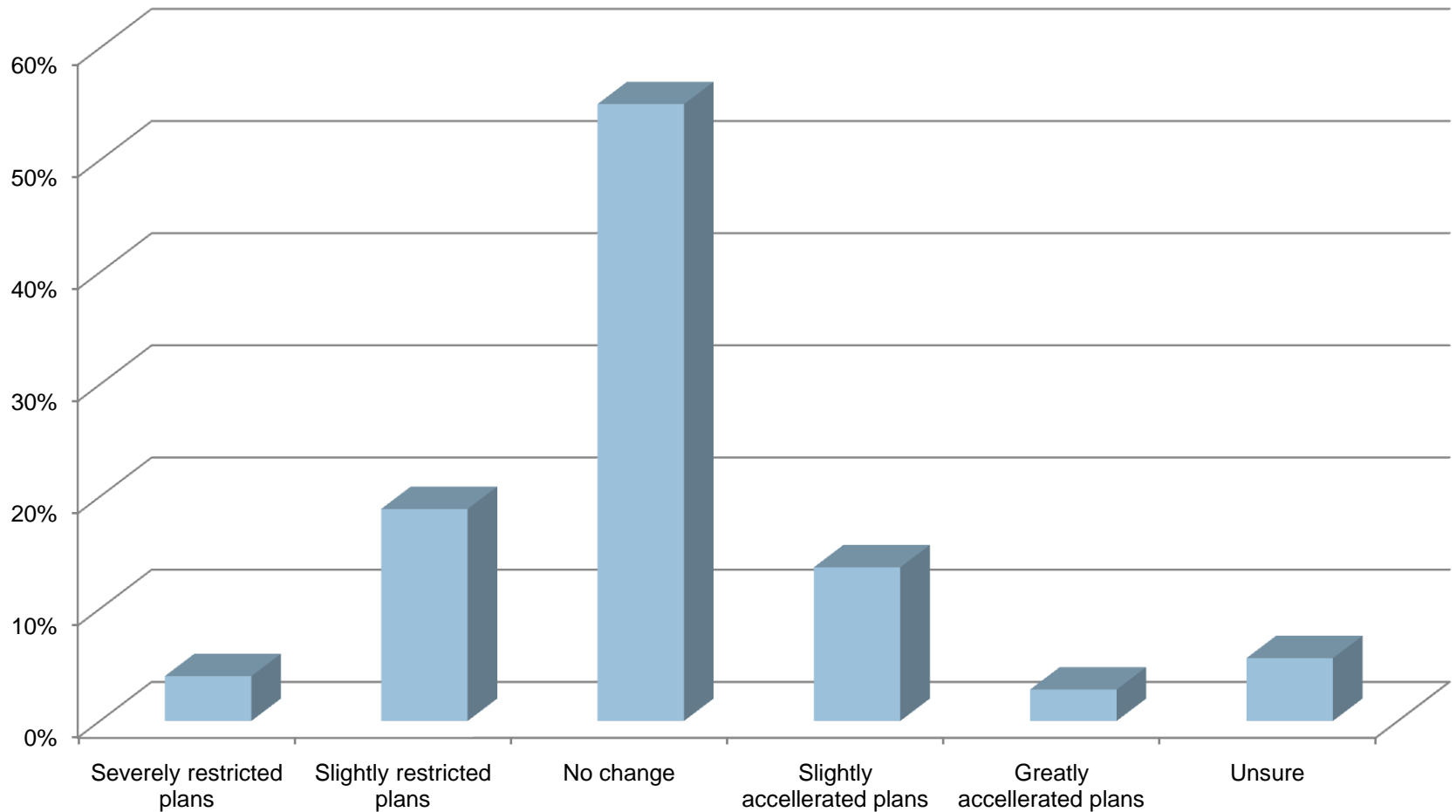
- ▶ Introduction Tracey Rawling Church
- ▶ The Carbon Trust Standard Henry Garthwaite
- ▶ Top 10 Technologies of 2020 Dan Ilett
- ▶ CRC Masterclass Mark Johnson
- ▶ Hosted discussion Dan Ilett
- ▶ Lunch
- ▶ The Age of Stupid
  
- ▶ We hope you have an enjoyable and informative day

# Are you ready?

---

- ▶ Survey by the Low Carbon Innovation Network in May 2009
- ▶ Senior executives from more than 250 organisations
  - All industry sectors
  - All sizes
  - 93% managerial and above
- ▶ 35% of respondents considered themselves to be within scope of the CRC
  - Of these, over a third did not believe they are prepared for it
- ▶ A quarter were unsure whether CRC applies to them, and 21% were not really aware of it
  - Only 18% were certain they fall outside its criteria
- ▶ Led us to believe that there was a need for today's event

# To what extent, if any, has the current economic downturn impacted your drive to reduce carbon emissions?



# How would you describe your organisation's situation regarding energy management?

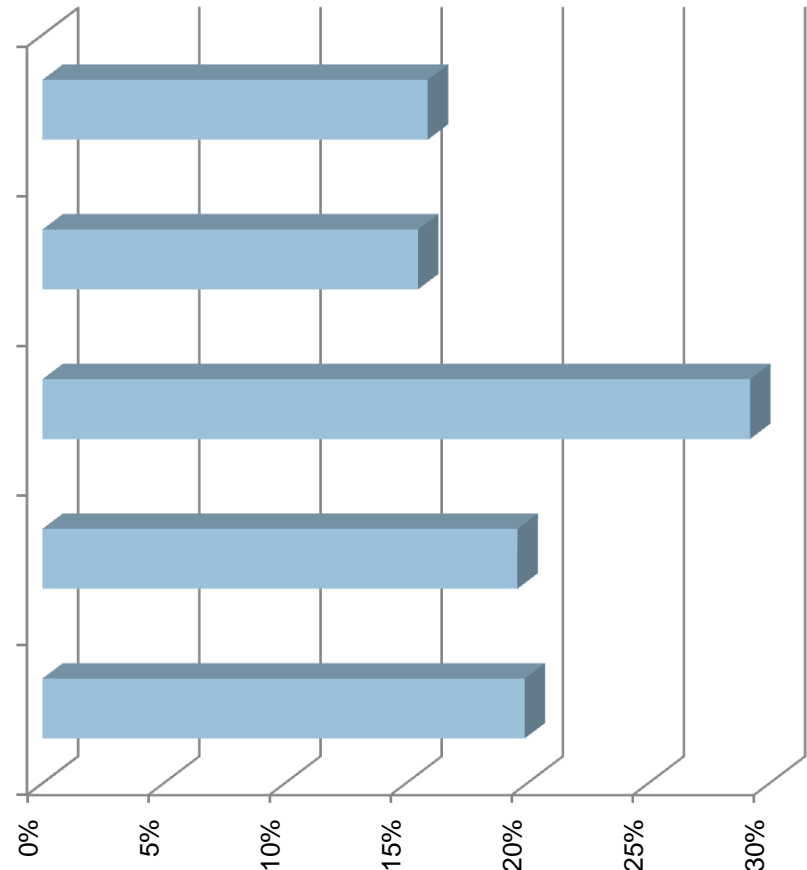
We don't have an energy management programme

We are in the process of establishing an energy management system

We are monitoring energy usage but have no targets in place

We are monitoring energy usage, have set target but are not fully meeting them

We are monitoring energy usage, have set firm targets for reduction and are on track to achieve them



# To what extent do you monitor energy consumption by department?

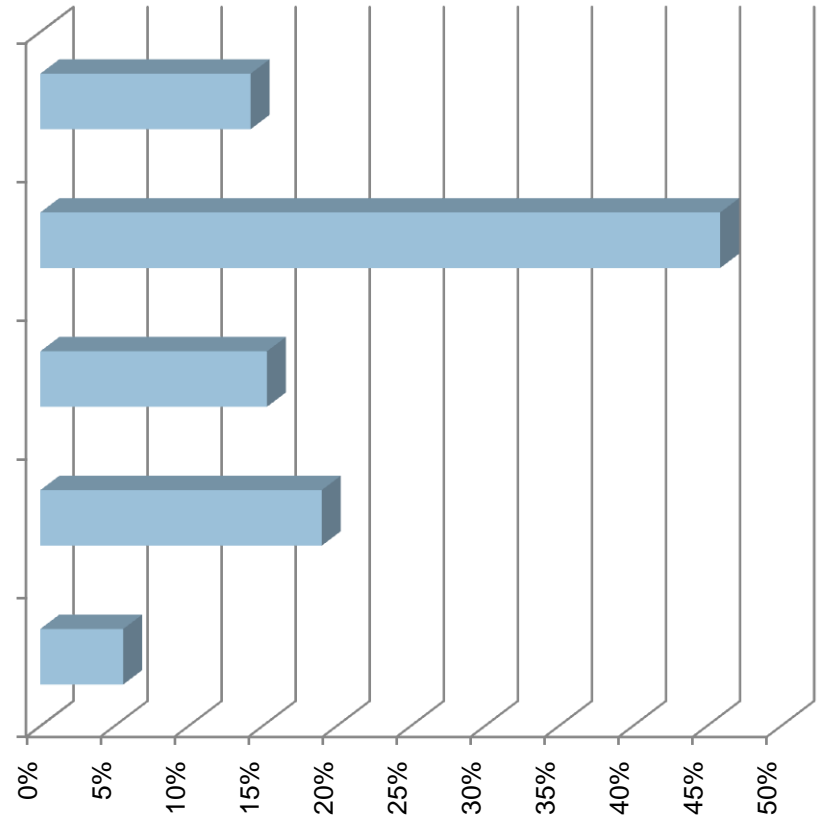
We don't analyse energy consumption even at organisation level

We don't break down energy consumption data below organisation level

We analyse some departments individually, if we believe that they represent a significant proportion of energy use

We are monitoring energy consumption for each individual department, but targets are set for the organisation as a whole

We break down energy consumption by department and have set individual targets across the organisation



# Which of the following best describes your position regarding carbon footprinting of your organisation?

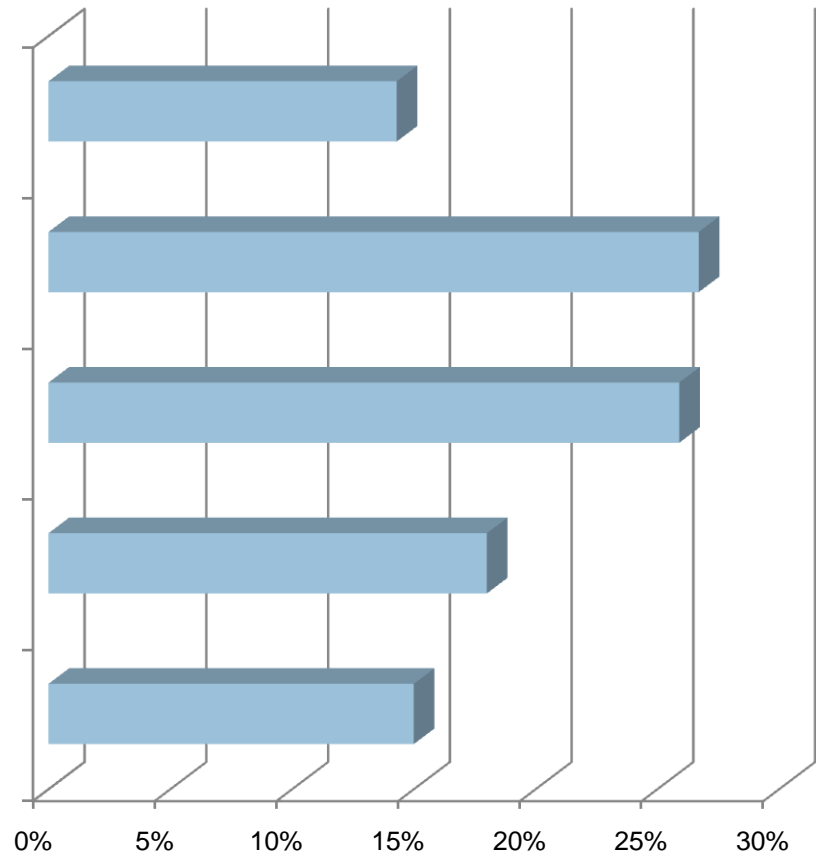
We have no plans to measure our carbon footprint

We want to measure our carbon footprint but are unsure how to go about it

We are in the process of (or considering) measuring our carbon footprint and have chosen a methodology

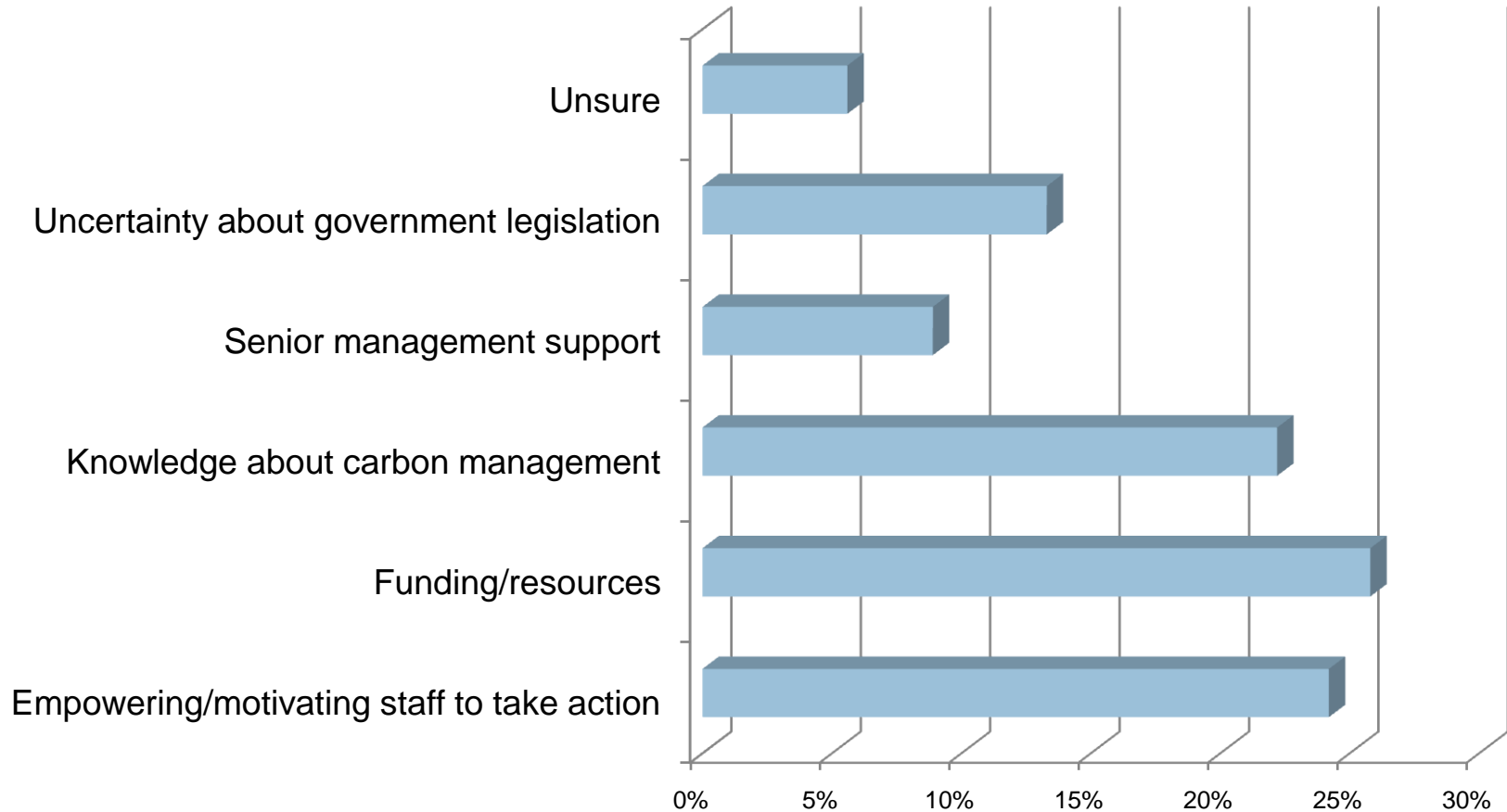
We have measured our carbon footprint but are not engaging with suppliers or customers on this subject

We have measured our carbon footprint and are actively encouraging our suppliers and customers to do the same

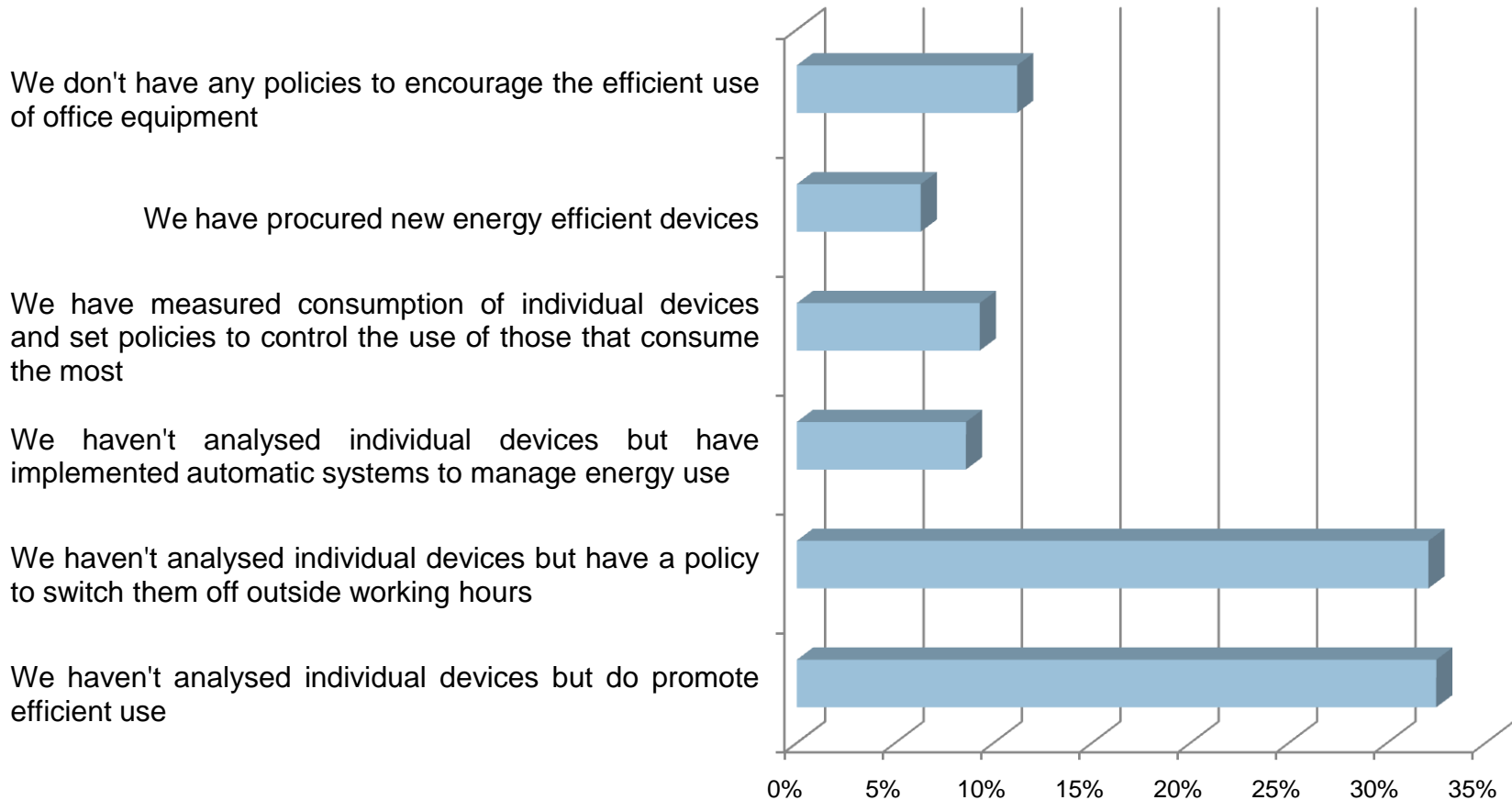


# What do you think is the single biggest challenge your organisation faces regarding carbon reduction?

---



# How do you address the energy impact of your office equipment?



# What are the potential benefits?

- ▶ 130 printers rationalised to 30 MFPs
- ▶ Projected consumables saving is £1million over 5 years, plus:

## Energy

<b>Energy Reduction per Year (kWh)</b>	20,819
<b>Co2 Reduction Per Year (Kg)*</b>	11,180
<b>Cost Reduction per year**</b>	£1,852
<b>Cost Reduction over Term</b>	£9,264

## Paper

<b>Reams Saved Per Year</b>	1,080
<b>Cost Saved Per Year</b>	£2,160
<b>Paper Weight Saved Per Year (kg)</b>	2,697
<b>Trees saved over term***</b>	324
<b>Cost Saved over Term</b>	£10,800

# Conclusions

---

- ▶ The Carbon Trust calculates that 15% of the energy consumed by UK businesses is used by office equipment
  - Projected to increase to 30% by 2012
- ▶ If legislation addresses energy consumption then office machines are an easy win for most organisations
- ▶ You can save money – and avoid penalties – just by optimising the devices you already have
  - Consider a print audit to determine what is printed where and by whom
  - Re-assign devices to achieve maximum energy efficiency and minimum cost
- ▶ Behaviour change needed to convert policy into practice

